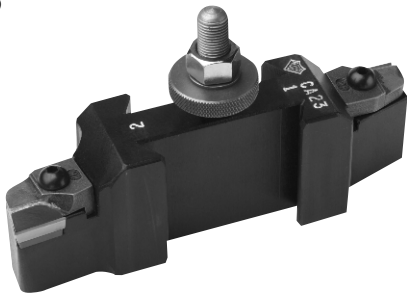


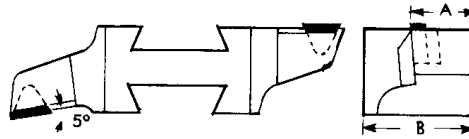
QUICK CHANGE CARBIDE INSERT CUTTING TOOLS

#23



TURNING AND FACING HOLDER

A combination holder with quick-reversibility. Position #1, with no offset and Position #2, with 5° offset; provides smooth, chatter-free turning and facing. Holder accommodates standard triangular **positive** rake inserts. Supplied with fully adjustable carbide chip breakers and shims to protect the holder.



REPLACEMENT ADJUSTABLE CARBIDE CHIPBREAKER



AXA-AX SERIES

ORDER # AXA-23
PRICE EA. \$258.00

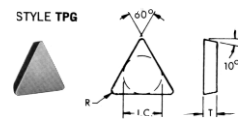
A	B	TRIANGULAR INSERT		
		I.C.	THICK	RAKE
7/8	1 3/8	3/8	1/8	POS.

REPLACEMENT CARBIDE SHIM USED UNDER CARBIDE INSERT



ORDER # 1-R*
PRICE EA. \$24.00

ORDER # SM-41*
PRICE EA. \$7.00



ORDER #	DIMENSIONS		
	I.C.	T	R
TPG-322*	3/8	1/8	1/32
TPG-432*	1/2	3/16	1/32

Inserts are priced individually however, they must be purchased in packages of 10.

See full selection of inserts on pages 49 – 54.

ORDER # TPG-322

GRADE	PRICE
A2/A6	6.30
767	10.30

BUTTON HEAD CHIPBREAKER/CLAMP SCREW



ORDER # SCR-12*
PRICE EA. \$5.00

SHIM CLAMP SCREW (SET OF 5)



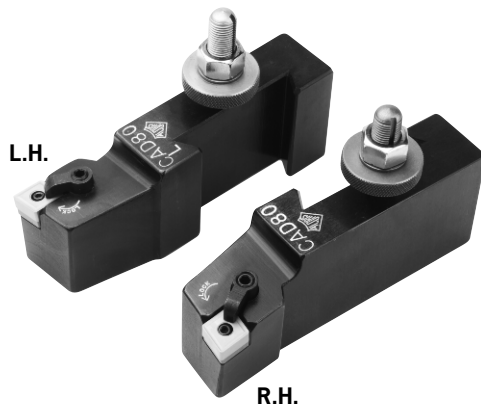
ORDER # SM-41SS*
PRICE \$7.00 Set

HEIGHT ADJUSTMENT ASSEMBLY



ORDER # AXA-HA*
PRICE EA. \$10.50

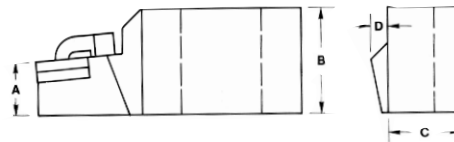
#80 & #80L



80° DIAMOND TURNING AND FACING TOOL

Aloris Series D80 and D80L dovetail holders accommodate all varieties of standard 80° diamond shaped carbide inserts — positive, negative or neutral rake and either left or right lead angle. Inserts are not supplied.

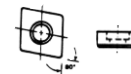
They are designed for use with Aloris quick change tool posts and allow turning and facing operations without removing the holder from the tool post. Repeat positioning accuracy within millionths is assured when used with Aloris tool posts.



ORDER # AXAD-80 PRICE EA. \$156.00
ORDER # AXAD-80L PRICE EA. \$156.00

A	B	C	D	IC
1"	1 1/2	1 1/16	3/16	1/2

SHIMS



ORDER # SM-303*
PRICE EA. \$17.90

PINS



ORDER # LP-56*
PRICE EA. \$11.50

80° CARBIDE INSERTS

ORDER NUMBER	DIMENSIONS			
	I.C.	H	R	T
CNMG-432*	1/2	.203	1/32	3/16
CNMG-543*	5/8	.250	3/64	1/4
CNMG-643*	3/4	.312	3/64	1/4

Inserts are priced individually however, they must be purchased in packages of 10.

See full selection of inserts on pages 49 – 54.

ORDER # CNMG-432

GRADE	PRICE
A2/A6	9.70
767	14.40

CLAMP



ORDER # ACK-21*
PRICE EA. \$13.75

CLAMP SCREW



ORDER # ASTC-20*
PRICE EA. \$3.60

HEIGHT ADJUSTMENT ASSEMBLY



ORDER # AXA-HA*
PRICE EA. \$10.50

**100 & up call for price.

See full selection of inserts on pages 49 – 54.



TECHNICAL DATA:
DIMENSIONS – CAPACITIES – MODELS

BXA-BX SERIES					CXA-CX SERIES					CA SERIES					DA SERIES					EA SERIES				
ORDER # BXA-23 PRICE EA. \$277.00					ORDER # CXA-23 PRICE EA. \$304.00					ORDER # CA-23 PRICE EA. \$356.00														
A	B	TRIANGULAR INSERT			A	B	TRIANGULAR INSERT			A	B	TRIANGULAR INSERT												
		I.C.	THICK	RAKE			I.C.	THICK	RAKE			I.C.	THICK	RAKE										
1"	1 3/4"	3/8"	1/8"	POS.	1 1/16"	2"	3/8"	1/8"	POS.	1 1/2"	2 1/4"	1/2"	3/16"	POS.										
ORDER # 1-R* PRICE EA. \$24.00					ORDER # 1-R* PRICE EA. \$24.00					ORDER # 2-R* PRICE EA. \$25.00														
ORDER # SM-41* PRICE EA. \$7.00					ORDER # SM-41* PRICE EA. \$7.00					ORDER # SM-37* PRICE EA. \$7.70														
ORDER # TPG-322†					ORDER # TPG-322†					ORDER # TPG-432†														
GRADE		PRICE			GRADE		PRICE			GRADE		PRICE												
A2/A6		6.30			A2/A6		6.30			A2/A6		9.15												
767		10.30			767		10.30			767		15.70												
ORDER # SCR-12* PRICE EA. \$5.00					ORDER #: SCR-12* PRICE EA. \$5.00					ORDER #: SCR-12* PRICE EA. \$5.00														
ORDER # SM-41SS* PRICE \$7.00 Set					ORDER # SM-41SS* PRICE \$7.00 Set					ORDER # SM-37SS* PRICE \$8.25 Set														
ORDER # BXA-HA* PRICE EA. \$10.50					ORDER # CXA-HA* PRICE EA. \$11.00					ORDER # CA-HA* PRICE EA. \$13.00														
ORDER # BXAD-80 PRICE EA. \$172.00		ORDER # BXAD-80L PRICE EA. \$172.00			ORDER # CXAD-80 PRICE EA. \$182.00		ORDER # CXAD-80L PRICE EA. \$182.00			ORDER # CAD-80 PRICE EA. \$226.00		ORDER # CAD-80L PRICE EA. \$226.00			ORDER # DAD-80 PRICE EA. \$263.00		ORDER # DAD-80L PRICE EA. \$263.00			ORDER # EAD-80 PRICE EA. \$328.00		ORDER # EAD-80L PRICE EA. \$328.00		
A	B	C	D	IC	A	B	C	D	IC	A	B	C	D	IC	A	B	C	D	IC	A	B	C	D	IC
1 1/16"	1 5/8"	1 1/4"	3/16"	1/2"	1 1/16"	2"	1 1/4"	3/16"	1/2"	1 9/16"	2 1/4"	1 3/8"	3/8"	5/8"	1 3/4"	2 7/8"	1 9/16"	3/8"	5/8"	2 3/8"	3 1/2"	2"	3/8"	3/4"
ORDER # SM-303* PRICE EA. \$17.90					ORDER # SM-303* PRICE EA. \$17.90					ORDER # SM-390* PRICE EA. \$23.00					ORDER # SM-390* PRICE EA. \$23.00					ORDER # SM-304* PRICE EA. \$28.60				
ORDER # LP-56* PRICE EA. \$11.50					ORDER # LP-57* PRICE EA. \$11.00					ORDER # LP-67* PRICE EA. \$12.00					ORDER # LP-67* PRICE EA. \$12.00					ORDER # LP-72* PRICE EA. \$17.60				
ORDER # CNMG-432†					ORDER # CNMG-432†					ORDER # CNMG-543†					ORDER # CNMG-543†					ORDER # CNMG-643†				
GRADE		PRICE			GRADE		PRICE			GRADE		PRICE			GRADE		PRICE			GRADE		PRICE		
A2/A6		9.70			A2/A6		9.70			A2/A6		15.40			A2/A6		15.40			A2/A6		21.20		
767		14.40			767		14.40			767		18.70			767		18.70			767		25.88		
ORDER # ACK-21* PRICE EA. \$13.75					ORDER #: ACK-21* PRICE EA. \$13.75					ORDER #: ACK-12* PRICE EA. \$13.20					ORDER #: ACK-12* PRICE EA. \$13.20					ORDER #: ACK-12* PRICE EA. \$13.20				
ORDER # ASTC-20* PRICE EA. \$3.60					ORDER # ASTC-20* PRICE EA. \$3.60					ORDER # ASTC-4* PRICE EA. \$3.60					ORDER # ASTC-4* PRICE EA. \$3.60					ORDER # ASTC-4* PRICE EA. \$3.60				
ORDER # BXA-HA* PRICE EA. \$10.50					ORDER # CXA-HA* PRICE EA. \$11.00					ORDER # CA-HA* PRICE EA. \$13.00					ORDER # DA-HA* PRICE EA. \$16.00					ORDER # EA-HA* PRICE EA. \$19.00				

*Sold in package of 10 pcs. **100 & up call for price.

See full selection of inserts on pages 49 – 54.