

QUALIFIED TOOL POSTS AND HOLDERS

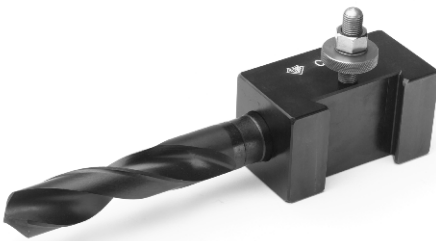
...a full range of qualified tooling to meet the rigorous repeat accuracy demands of C.N.C. Lathe operation, combined with the advantages and convenience of quick-change versatility, high-precision and superb workmanship – time and job proven qualities which have made Aloris products the tools preferred by lathe craftsmen for over 40 years. The Aloris Q System provides simplicity in set-up, programming and operation of C.N.C. lathes. The point of origin (grid line), custom located for your particular lathe, is a fixed reference for setting up all tools used in the system. The Aloris Q System can also be used on conventional lathes, with superior results.



CA-Q Qualified Tool Post

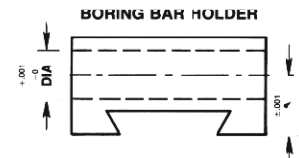
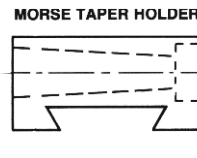
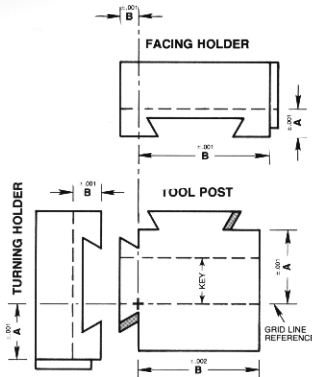
Aloris Q System Tool Posts have fully qualified working surfaces. Perpendiculars are accurately parallel and square to the base. For point of origin location, qualified surface data and other dimensions see below.

CA-1Q Turning Holder



Qualified Tool Holders

Aloris Qualified Tool Holders are designed for use with all manually or C.N.C. Lathes. All are available in CA __ Q and DA __ Q sizes. They feature parallel and square working surfaces to assure automatic resumption of the preset qualified working position every time the holder is locked into place.



TECHNICAL DATA: MODELS — DIMENSIONS — CAPACITIES

CA SERIES

ORDER #	PRICE EA.	DIMENSIONS		CAPACITY	REPLACEMENT PARTS					
		A	B		HEIGHT ADJUSTMENT	"T" BOLT	SET SCREW			
CA-Q	\$889.00	2.400	3.525	19" SWING	ORDER #	PRICE EA.	"T" BOLT	ORDER #	PRICE PER SET OF 4	
CA-1Q	\$203.00	1.460	.915	1"	CA-HA*	\$13.00	CA-TB*	\$68.00		
CA-1LQ	\$203.00	.915	3.860	1"	CA-HA*	\$13.00				
*MORSE TAPER HOLDERS										
CA-52Q	\$224.00	1.375	—	#2 M.T.	CA-HA*	\$13.00				
CA-53Q	\$224.00			#3 M.T.	CA-HA*	\$13.00				
CA-54Q	\$224.00			#4 M.T.	CA-HA*	\$13.00				
**BORING BAR HOLDERS										
CA-4Q-750	\$236.00	1.375	.625	1/2"	CA-HA*	\$13.00	CAQ-SS*	\$7.00		
CA-4Q-1000	\$236.00			1"	CA-HA*	\$13.00	CAQ-SS*	\$9.00		
CA-4Q-1250	\$249.00			1 1/2"	CA-HA*	\$13.00	CAQ-SS*	\$8.00		
CA-4Q-1500	\$264.00			1 3/4"	CA-HA*	\$13.00	CAQ-SS*	\$8.00		
CA-4Q-1750	\$264.00			1.750	1 1/2"	CA-HA*	\$13.00	CAQ-SS*	\$8.00	
CA-4Q-2000	\$273.00			2"	CA-HA*	\$13.00	CAQ-SS*	\$8.00		

DA SERIES

ORDER #	PRICE EA.	DIMENSIONS		CAPACITY	REPLACEMENT PARTS					
		A	B		HEIGHT ADJUSTMENT	"T" BOLT	SET SCREW			
DA-Q	\$1,147.00	3.100	4.400	24" SWING	ORDER #	PRICE EA.	"T" BOLT	ORDER #	PRICE PER SET OF 4	
DA-1Q	\$240.00	1.450	1.500	1 1/2"	DA-HA*	\$16.00	DA-TB*	\$85.00		
DA-1LQ	\$240.00	1.500	4.550	1 1/2"	DA-HA*	\$16.00				
*MORSE TAPER HOLDERS										
DA-53Q	\$264.00	2.000	—	#3 M.T.	DA-HA*	\$16.00				
DA-54Q	\$264.00			#4 M.T.	DA-HA*	\$16.00				
DA-55Q	\$264.00			#5 M.T.	DA-HA*	\$16.00				
**BORING BAR HOLDERS										
DA-4Q-1000	\$290.00	2.000	.625	1"	DA-HA*	\$16.00	DAQ-SS*	\$ 9.00		
DA-4Q-1250	\$290.00			1 1/2"	DA-HA*	\$16.00	DAQ-SS*	\$11.00		
DA-4Q-1500	\$302.00			1 3/4"	DA-HA*	\$16.00	DAQ-SS*	\$11.00		
DA-4Q-1750	\$315.00			2"	DA-HA*	\$16.00	DAQ-SS*	\$11.00		
DA-4Q-2000	\$333.00			2 1/2"	DA-HA*	\$16.00	DAQ-SS*	\$11.00		
DA-4Q-2500	\$357.00			2.250	2 1/2"	DA-HA*	\$16.00	DAQ-SS*	\$11.00	
DA-4Q-3000	\$394.00			2.500	.935	3"	DA-HA*	\$16.00	DAQ-SS*	\$11.00

When ordering replacement set screws please provide dimensions.