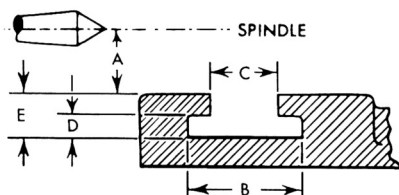


RECOMMENDATIONS FOR BENCH, CNC AND ENGINE LATHES

MAKE OF LATHE	SWING	ALORIS TOOL POST	CAPACITY		MAKE OF LATHE	SWING	ALORIS TOOL POST	CAPACITY		MAKE OF LATHE	SWING	ALORIS TOOL POST	CAPACITY				
			MAX TOOL BIT	MAX BOR. TOOL				MAX TOOL BIT	MAX BOR. TOOL				MAX TOOL BIT	MAX BOR. TOOL			
ACER	1340G 1440E & G 1740G 2080G	BXA CXA CA DA	5/8"	1 1/4"	GRAZIANO SAG	12" 14" 20"	BXA CXA CA	3/4"	1 1/4"	NARDINI	TT1000 TT1200 MS1400 MS1600 ND1500 ND1700 IN2000 IN2500 SZ2000 SZ2500 AM25 32 40	AXA AXA BXA CXA CXA CA CA DA DA DA EA	5/8"	1 1/4"			
			3/4"	1 1/4"				1/2"	1"				5/8"	1 1/4"			
ALPHA	A330 A400 A460 A550	BXA CXA CA DA	5/8"	1 1/4"	HARDINGE	11", 12" & 13" 17"	BXA CA	3/4"	1 1/4"				HARRISON	9" 12" & 1GP 2GP, 4C, 14" & 16" 18", 20" & 24"	AXA BXA CXA CA	1"	1 1/2"
			3/4"	1 1/4"				1/2"	1"							3/4"	1 1/4"
AMERICAN	14"B, 16"C & 20"D 20"E & 25"F 25"G, 32"H, 32" I & 40" J	CA DA EA	1"	1 1/2"	HENDEY	40	DA or EA	1/2"	2 1/2"				HERCULES	14" 18" 24"	CXA CA DA	3/4"	1 1/4"
			1 1/4"	2"				1"	1 1/2"							1"	1 1/2"
ATLAS	6", 10" & 12"	AXA	1/2"	1"	HERCULES AJAX	14" 18" 24"	CXA CA DA	3/4"	1 1/4"				NEBEL	1307, 2013 & 2516 SB-2516-20 & HXB26/45	CA CA or DA CA or DA	3/4"	1 1/4"
AXELSON	14" & 16"B 20"W, 20"D, 25"E 2516 & 3419 32F	CA DA DA EA	1"	1 1/2"	IKEGAI	20"	CA	1"	1 1/2"				OKUMA	LS14"LK 18"LS & 21"LS	CXA CA	3/4"	1 1/4"
			1 1/4"	2 1/2"				1"	1 1/2"							1"	1 1/2"
BARER MEUSER	MOL16", MIL18" MILL18", 20" & 22" MHIL24", MIV24", 28" & 32"	CXA CXA CA or DA CA or DA	3/4"	1 1/4"	KERRY	11" & 13"	AXA	1/2"	1"				REED PRENTICE	14" & 16" 20"	CA DA	1"	1 1/2"
			1 1/4"	2"				3/4"	1 1/4"	1 1/4"	2"						
BOYE & EMMES	14" & 16" 18", 20" & 22" 25" & 32"	CA DA EA	1"	1 1/2"	LEBLOND DUAL DRIVE	15"	CXA	3/4"	1 1/4"	RIVETT	608, 715R & 9185 1020A	AXA BXA	1/2"	1"			
			1 1/4"	2"				1 1/4"	2 1/2"				5/8"	1 1/4"			
BRIDGEPORT ROMI	13-5 16-8 20-10	BXA CXA CA	5/8"	1 1/4"	LEBLOND HEAVY DUTY	1610, NE-2013 & 2516 NF-2516 & 3220 NI-3220 & 4025 NK-4025 & 5032	CXA CA DA EA	3/4"	1 1/4"	ROCKWELL	10" & 11" 14"	AXA BXA	1/2"	1"			
			1"	1 1/2"				1 1/4"	2 1/2"				5/8"	1 1/4"			
CARROL & JAMIESON	15", 16" & 18"	CXA	3/4"	1 1/4"	LEBLOND REGAL	13" 15" 17", 19", 21" & 24"	BXA CXA CA	5/8"	1 1/4"	SHARP		AXA BXA CXA CA	5/8"	1 1/4"			
			1"	1 1/2"				1"	1 1/2"				3/4"	1 1/4"			
CINCINNATI HYDRASHIFT	10" & 12 1/2" 15" & 18" 21" 26"	BXA CXA CA DA	5/8"	1 1/4"	LEHMANN BRANDES	16", 18" & 20" 22", 25", 32" & 36"	CA EA	1"	1 1/2"	SHELDON	10" 11" & 13" 15 & 17"	AXA BXA CXA or CA	1/2"	1"			
			1"	1 1/2"				1 1/4"	2"				5/8"	1 1/4"			
CINCINNATI TRAY LATHES	15" 18"	BXA CXA	5/8"	1 1/4"	LOGE AND SHIPLEY	1307 1610, 2013, 2013-17 & 2013-27 2516 & 2516-27 3220, 2516 & 2516-21	CXA CA CA DA EA EA	3/4"	1 1/4"	SHELDON SEBASTIAN	13" 15"	BXA CXA or CA	5/8"	1 1/4"			
			3/4"	1 1/4"				1"	1 1/2"				1"	1 1/2"			
CINCINNATI HEAVY DUTY LATHES	14" 16" 18" & 20" 22" & 24"	BXA CXA CA DA	5/8"	1 1/4"	LOGAN	9", 10", 11" & 12" 14"	AXA BXA	1/2"	1"	SIDNEY	1307, 169, 1812 & 2013 2214 & 2516 2217 3419	CXA CA DA EA	3/4"	1 1/4"			
			1"	1 1/2"				1 1/4"	2"				1"	1 1/2"			
CLAUSING	10 1300 Series 1400 & 15" Series	AXA BXA CXA	1/2"	1"	MAZAK	14" 17" 18-21-860 24" 30"	CXA CA CA DA EA	3/4"	1 1/4"	SIGMA	SN20A SV18R-15 SN4016, 4518 & 5020 SN55-22, 6325 & 71-28	BXA CXA CA CA or DA	5/8"	1 1/4"			
			3/4"	1 1/4"				1"	1 1/2"				1"	1 1/2"			
CLAUSING COLCHESTER	13" 15" 17" & 21"	BXA CXA CA	5/8"	1 1/4"	MISAL	K12 & K13 K14 & K16	AXA BXA	1/2"	1"	SOUTH BEND	9 & 10 1307, 13 & 14 16" 17"	AXA BXA BXA or CXA CA	1/2"	1"			
			3/4"	1 1/4"				5/8"	1 1/4"				5/8"	1 1/4"			
CRAFTSMAN	12"	AXA	1/2"	1"	MONARCH	10" 13 (60 & 61) K-15 COMPACT 1000EE & 16 (60 & 61) 62 SERIES 1610 20" (60 & 61) 62 SERIES 2013 MODEL M & 62 SER. 2516 MODEL N & 80 SER. 2516 80 SER. 3220 MODEL NN 90 SER. 4025	AXA BXA CXA CA CA DA DA DA DA EA EA	1/2"	1"	SOUTH IND	15"	CXA	3/4"	1 1/4"			
DELTA	10" & 11" 14"	AXA BXA	1/2"	1"				SPRINGFIELD	14" & 16" 18", 20", 22" & 24" 30"				CA DA EA	1"	1 1/2"	STANDARD MODERN	10" 12" 14" & 16" 17"
			3/4"	1 1/4"						1"	1 1/2"	1"		1 1/2"			
ELGIN	15 & 16	AXA	1/2"	1"				VDF	16 1/8" 17 1/8" & 18 3/4" 20 1/2"	CXA CA DA	3/4"	1 1/4"	VOEST	17" & 20"	CXA	3/4"	1 1/4"
ELLIOTT	18 & 21	CXA	3/4"	1 1/4"							1"	1 1/2"				1"	1 1/2"
ELLIOTT CONCORD	18 & 21	CA	1"	1 1/2"				EMCO MAIER	SUPER II ELNOMAT13S ELNOMAT15D	AXA BXA CXA	1/2"	1"	GALLIC	14" & 16"	BXA	5/8"	1 1/4"
GALLIC	14" & 16"	BXA	5/8"	1 1/4"							3/4"	1 1/4"				1"	1 1/2"

"T" NUT ORDERING INFORMATION



MAKE OF LATHE	SWING	A	B	C	D	E

When ordering, please give name and swing of lathe or specified dimensions. Please fax the above chart with your order. Without this information "T" nut will be supplied blank. There is an extra charge for riser-blocks.