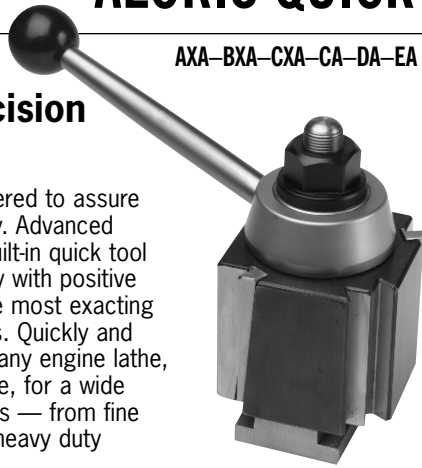


ALORIS QUICK CHANGE TOOL POSTS

Aloris Super-Precision Tool Post

Precision engineered to assure repetitive accuracy. Advanced design provides built-in quick tool changing versatility with positive rigidity to meet the most exacting working tolerances. Quickly and easily installed on any engine lathe, bench or CNC lathe, for a wide range of operations — from fine precision work to heavy duty cutting.

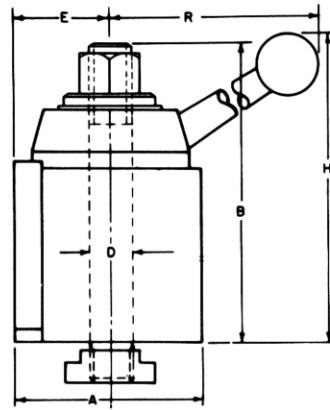
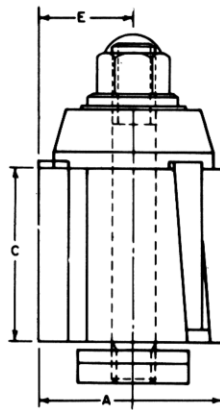
AXA-BXA-CXA-CA-DA-EA



AX-BX-CX

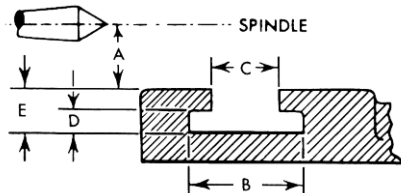
Aloris Piston Type Tool Post

Aloris piston type tool post provides built-in quick tool changing versatility with positive rigidity. Can be quickly and easily installed on any engine or bench lathe to increase production and cut operating costs.



ORDERING INFORMATION

AXA-AX SERIES		BXA-BX SERIES		CXA-CX SERIES		CA SERIES		DA SERIES		EA SERIES																																													
ORDER #: AXA \$324.00 ORDER #: AX \$262.00		ORDER #: BXA \$395.00 ORDER #: BX \$298.00		ORDER #: CXA \$538.00 ORDER #: CX \$390.00		ORDER #: CA \$677.00		ORDER #: DA \$956.00		ORDER #: EA \$1,511.00																																													
DIMENSIONS		DIMENSIONS		DIMENSIONS		DIMENSIONS		DIMENSIONS		DIMENSIONS																																													
A	B	C	D	E	H	R	SWING UP TO	A	B	C	D	E	H	R	SWING UP TO	A	B	C	D	E	H	R	SWING UP TO	A	B	C	D	E	H	R	SWING UP TO	A	B	C	D	E	H	R	SWING UP TO																
2½	3¾	2¼	¾	1¾	4¼	5¾	12"	3	4¾	2¾	¾	1¾	5¾	7¾	10-15"	3½	5¾	3	¾	1¾	6¾	7¾	13-18"	4	6¾	3¾	¾	2¾	7	9	14-20"	5	7¾	4¾	1"	2¾	8¾	10¾	17-48"	6	8½	5	1¼	3¾	10	13¾		6	8½	5	1¼	3¾	10	13¾	



MAKE OF LATHE	SWING	A	B	C	D	E

*To order tool holders see page 4 thru 25. *To order sets see pages 26 and 27.

*All Aloris Super Precision Quick Change Tool Posts are furnished with a completely machined "T"-bolt to fit your machine at no charge. Please fill out chart and fax.

POSTS: REPLACEMENT PARTS

Not Interchangeable with Indexable Tool Post Parts.

"T" BOLTS						
ORDER #	AXA-TB*	BXA-TB*	CXA-TB*	CA-TB*	DA-TB*	EA-TB*
PRICE EA.	\$41.00	\$44.00	\$57.00	\$68.00	\$85.00	\$94.00

BALLS						
ORDER #	AXA-BALL*	BXA-BALL*	CXA-BALL*	CA-BALL*	DA-BALL*	EA-BALL*
PRICE EA.	\$3.30	\$3.60	\$3.85	\$4.10	\$4.10	\$5.50

HANDLES						
ORDER #	AXA-HDL*	BXA-HDL*	CXA-HDL*	CA-HDL*	DA-HDL*	EA-HDL*
PRICE EA.	\$30.00	\$33.00	\$36.00	\$41.00	\$46.00	\$56.00

FLANGE NUTS						
ORDER #	AXA-FN*	BXA-FN*	CXA-FN*	CA-FN*	DA-FN*	EA-FN*
PRICE EA.	\$11.00	\$12.00	\$13.00	\$14.00	\$18.00	\$24.00