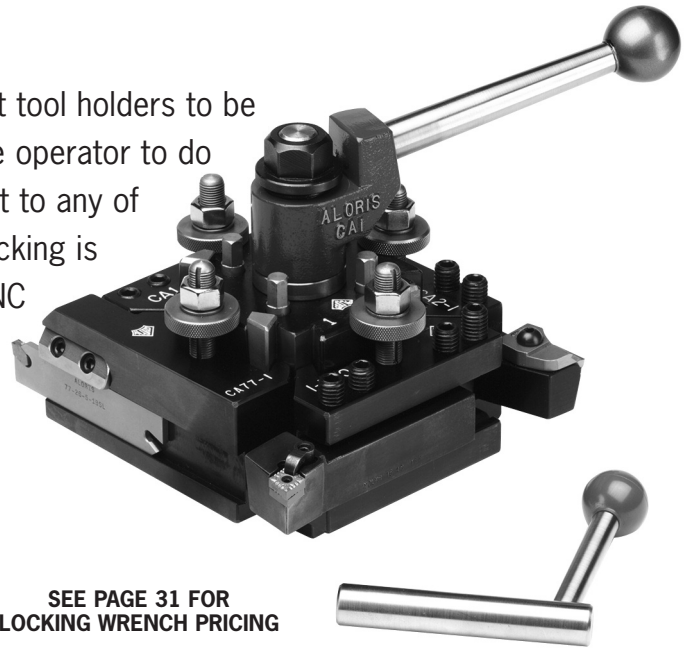


ALORIS INDEXABLE TOOL POSTS

FOR MANUAL AND CNC LATHES

- Precision Engineered to Assure Repetitive Accuracy
- Accuracy Within Millionths!
- CNC Applications
- Super Rigidity
- No Shims Required
- Available with Anti-rotation Key (Optional)
- Furnished with Blank "T" Nut or Machined "T" Nut (Optional)

The Aloris Indexable Tool Post allows 4 independent tool holders to be locked to the tool post simultaneously. This allows the operator to do multiple operations by means of indexing the tool post to any of the 24 locking positions. The index positioning and locking is accomplished by the same means as a turret on a CNC Lathe. This is the ultimate in productivity on Manual and CNC Lathes without indexing capabilities. Two standard Aloris Tool Holders can be mounted with no modification or you can modify some existing Aloris holders to fit the indexable tool post.



SEE PAGE 31 FOR LOCKING WRENCH PRICING

- Industry Standard
- Repeatability of .00005
- Some standard Aloris Tool Holders will fit if slightly modified
- All components heat treated and ground
- 24 positions, 15° precision indexing through heat treated precision ground face gears
- Precision engineered to assure repetitive accuracy
- Full length wedge lock as featured on the traditional Aloris Tool Post for ultimate rigidity
- Optionally furnished with anti-rotation key precision fit to lathe compound (**eliminates rotation and movement of tool post under extreme cutting conditions**)
- The highest quality lathe tool accessories available
- Only 3 sizes required for up to 36 inch swing
- Over forty five years of machine tool manufacturing experience
- Mounting wrench included with tool post

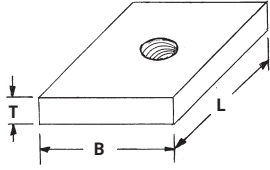
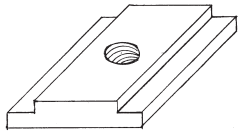
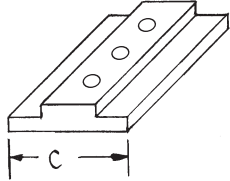


Face Gear for Indexable Tool Posts

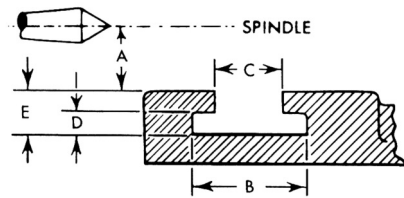
ORDERING INFORMATION

SERIES				SERIES				SERIES			
SWING	UP-15"			SWING	15"-22"			SWING	22"-36"		
ORDER #	BXA-I			ORDER #	CA-I			ORDER #	DA-I		
PRICE EACH	\$1,299.00			PRICE EACH	\$2,093.00			PRICE EACH	\$2,499.00		
A	B	C	D	A	B	C	D	A	B	C	D
3"	2¾"	5"	9/16"	4"	3½"	6¾"	¾"	5"	4⅝"	8¾"	7/8"

ALORIS INDEXABLE TOOL POST OPTIONS

	"T" NUT BLANK	ORDER # BXA-I-TB* PRICE EA. \$52.80	ORDER # CA-I-TB* PRICE EA. \$81.60	ORDER # DA-I-TB* PRICE EA. \$102.00
	"T" DIM	1/2"	3/4"	7/8"
	"B" DIM	2 1/4"	2 1/2"	3"
	"L" DIM	2 1/2"	3 1/2"	4 1/2"
Nut and stud included. Customer to machine. Furnished with tapped hole only.				
	OPTIONAL "T" NUT MACHINED (FILL OUT CHART BELOW)	ORDER # BXA-I-TM* PRICE EA. \$39.75	ORDER # CA-I-TM* PRICE EA. \$52.80	ORDER # DA-I-TM* PRICE EA. \$66.00
	Machined by Aloris. Ready for installation.			
	OPTIONAL ANTI-ROTATION KEY (CUSTOMER TO FINISH "C" DIMENSION IN THE CHART BELOW)	ORDER # BXA-I-ARS* PRICE EA. \$72.00	ORDER # CA-I-ARS* PRICE EA. \$79.50	ORDER # DA-I-ARS* PRICE EA. \$99.75
	Semi-finished.			
	OPTIONAL "C" DIM. ANTI-ROTATION KEY (ALORIS TO FINISH "C" DIMENSION IN THE CHART BELOW)	ORDER # BXA-I-ARF* PRICE EA. \$199.00	ORDER # CA-I-ARF* PRICE EA. \$236.50	ORDER # DA-I-ARF* PRICE EA. \$273.00
	Finished and assembled by Aloris. (Precision Ground.)			

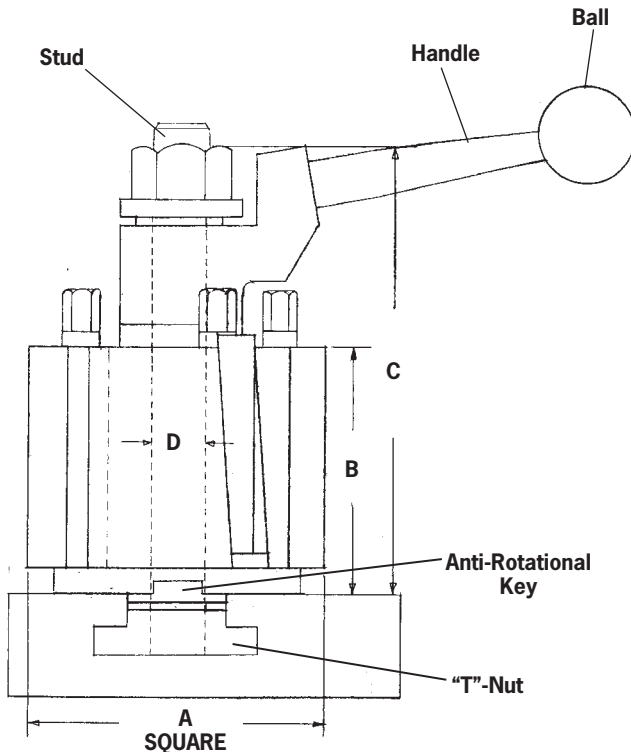
"T" NUT ORDERING INFORMATION



(Please Complete Chart and Fax)

MAKE OF LATHE	SWING	A	B	C	D	E

When ordering, please give name and swing of lathe or specified dimensions. Please fax the above chart with your order. Without this information "T" nut will be blank. There is an extra charge for riser-blocks.



INDEXABLE TOOL POST REPLACEMENT PARTS

Not interchangeable with standard tool post parts.

"T" BOLT ASSY = "T"-NUT AND STUD (INDEXABLE)			
ORDER #	BXA-I-TB*	CA-I-TB*	DA-I-TB*
PRICE EA.	\$52.80	\$81.60	\$102.00
HANDLES (INDEXABLE)			
ORDER #	BXA-I-HANDLE*	CA-I-HANDLE*	DA-I-HANDLE*
PRICE EA.	\$39.75	\$49.20	\$55.20
BALLS (INDEXABLE)			
ORDER #	BXA-I-BALL*	CA-I-BALL*	DA-I-BALL*
PRICE EA.	\$7.20	\$8.20	\$8.20
FLANGE NUTS (INDEXABLE)			
ORDER #	BXA-I-FN*	CA-I-FN*	DA-I-FN*
PRICE EA.	\$13.75	\$16.85	\$21.60
LOCKING WRENCH			
ORDER #	BXA-I-LW*	CA-I-LW*	DA-I-LW*
PRICE EA.	\$86.40	\$86.40	\$86.40