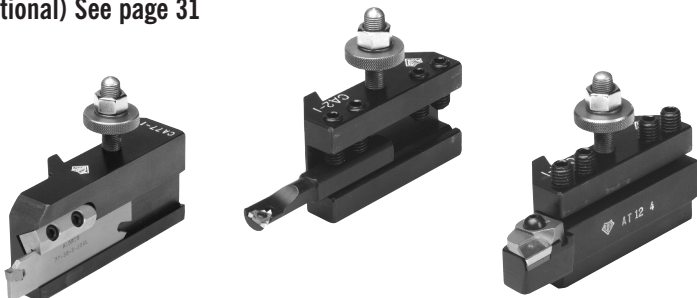
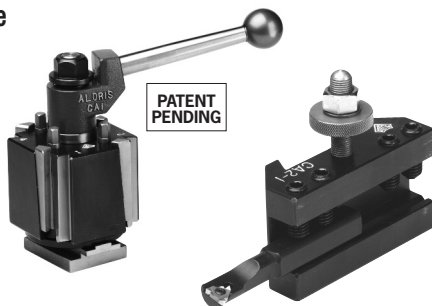


# ALORIS INDEXABLE STARTER SETS

FOR MANUAL AND CNC LATHES

- Precision Engineered to Assure Repetitive Accuracy
- Accuracy Within Millionths!
- CNC Applications
- Super Rigidity
- No Shims Required
- Available with Anti-rotation Key (Optional)
- Furnished with Blank "T" Nut or Machined "T" Nut (Optional) See page 31



This precision engineered tool post was designed by Aloris Tool Technology Co. Inc. to solve typical problems encountered by machinists. This tool post incorporates the full length Aloris wedge design for maximum rigidity, individual height adjustments—so shims are not required, and superior indexing which allows the machinist to select any of the tools which are mounted to accomplish multiple operations without removing tools from the holder absolutely reduces set-up time and cycle time, and enhances accuracy.

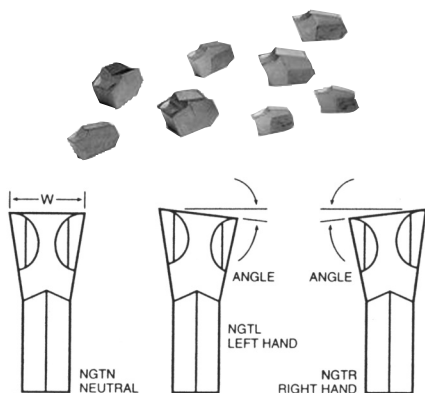
**The basic set consists of one tool post, mounting wrench, "T" nut blank, and four holders: 1 pc. – #1-I turning and facing; 2 pcs. – #2-I facing, turning, and boring; 1 pc. – #77-I cutoff. Blades, inserts, and boring bars not included.**

- Aloris recommends customers to order the indexable tool post with the optional Anti-rotation Key which avoids movement under extreme conditions.
- Spare parts pricing available upon request.

SERIES	BXA-I	CA-I	DA-I
ORDER #	BXA-I-SET	CA-I-SET	DA-I-SET
LIST PRICE FOR SET	\$1515.00	\$2352.00	\$2924.00
W/OVER 5% SAVINGS	<b>\$1439.00</b>	<b>\$2234.00</b>	<b>\$2778.00</b>

## GT STYLE SELF GRIP CARBIDE CUT-OFF INSERTS

FOR SELF-LOCKING BLADES, POSITIVE RAKE SHARP EDGE FOR MANUAL & CNC LATHES.  
SEE PAGE 54 FOR DESCRIPTION OF CARBIDE GRADES



### Aloris GT Cut-Off Insert

Catalog Number	Cutting Edge Geometry	Cutting Width	Lead Angle	List Price Grade A2 or A6 Each	List Price Grade 767 Each
GTN 2*	P	.087	0	\$ 7.00	\$ 7.95
** GT L/R 2*	P	.087	8	7.47	8.41
GTN 2.4*	P	.093	0	9.33	10.60
** GT L/R 2.4*	P	.093	8	9.33	11.20
GTN 3*	P	.120	0	6.99	7.95
** GT L/R 3*	P	.120	8	7.52	8.41
GTN 4*	P	.160	0	8.13	9.90
** GT L/R 4*	P	.160	8	8.58	10.38
GTN 4.8*	P	.187	0	11.73	14.12
** GT L/R 4.8*	P	.187	8	12.38	14.73
GTN 5*	P	.200	0	8.78	10.61
** GT L/R 5*	P	.200	8	9.05	11.03
GTN 6*	P	.250	0	13.69	16.08
** GT L/R 6*	P	.250	8	14.30	16.70
GTN 8*	P	.315	0	20.38	22.77
** GT L/R 8*	P	.315	4	20.98	23.38
GTN 9*	P	.375	0	27.16	32.74
** GT L/R 9*	P	.375	4	27.83	30.16

\*\*Specify left or right hand. \*\*\*Call for price over 100 quantity.  
Inserts are priced individually, however, they must be purchased in packages of 10.  
For blades see page 46.

## SELF LOCKING BLADES FOR #77-I HOLDERS



	BXA-I	CA-I	DA-I
ORDER #	SGIH 19-2*	SGIH 26-2*	SGIH 32-3*
WIDTH OF CUT x HEIGHT	.093 x .750	.093 x 1.00	.120 x 1.25
PRICE EA.	\$78.00	\$78.00	\$90.00
ORDER #	SGIH 19-3*	SGIH 26-3*	SGIH 32-5*
WIDTH OF CUT x HEIGHT	.120 x .750	.120 x 1.00	.187 x 1.25
PRICE EA.	\$78.00	\$81.00	\$91.00
ORDER #		SGIH 26-4*	SGIH 32-6*
WIDTH OF CUT x HEIGHT		.160 x 1.00	.250 x 1.25
PRICE EA.		\$81.00	\$91.00
ORDER #		SGIH 26-5*	
WIDTH OF CUT x HEIGHT		.187 x 1.00	
PRICE EA.		\$81.00	

See full selection of cutting tools on pages 49 – 54.