

ALORIS CARTRIDGE-HEAD BORING BAR

FOR DEEP HOLE BORING OPERATIONS

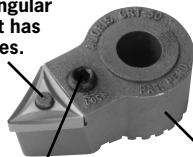
The Aloris boring bar/cartridge combination is designed for maximum rigidity, will not permit tool deflection. All parts are heat treated for maximum strength. The cartridge, with its 12 indexing positions at 15° intervals, provides for many

angular boring operations. Angular positions are illustrated below. The two-way adjustable rake provides 5° cutting angle with positive stop. Adjustment is made by loosening cradle lock screws and selecting desired setting.



Cartridge cradle

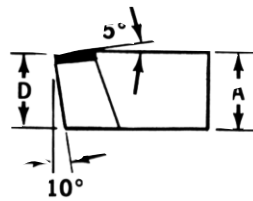
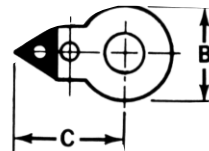
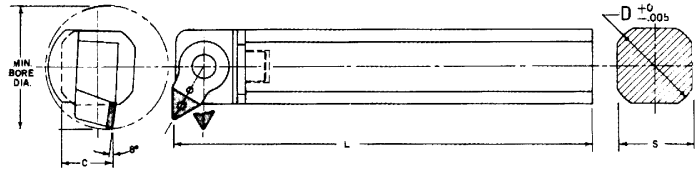
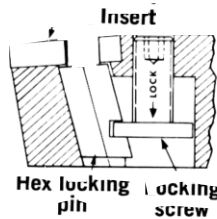
Standard triangular carbide insert has 6 cutting edges.



Exclusive positive lock with 2-way force holding insert down and tight against shoulder.

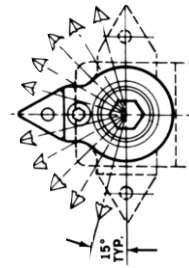
Tool Steel Cartridge adjuster every 15° for right or left hand turning facing or chamfering. 12 positive lock positions.

LOCKING DEVICE ASSEMBLY



PICTORIAL DIAGRAM OF CARTRIDGE

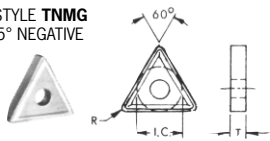
CARTRIDGE has 12 indexing positions at 15° intervals. This means many angular turning and chamfering jobs can be done faster and easier.



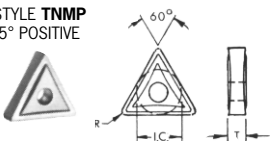
ORDERING INFORMATION							REPLACEMENT PARTS							
BORING BAR ORDER #	PRICE EA.	MIN. BORE DIA.	TOTAL LENGTH L	S	D	C	CARTRIDGE		CARTRIDGE CRADLE		HEX LOCKING PIN		LOCKING SCREW	
							ORDER #	PRICE EA.	ORDER #	PRICE EA.	ORDER #	PRICE EA.	ORDER #	PRICE EA.
CBB4-20	\$250.00	2 3/8	16"	1 1/4	1 1/2	1"	CRT-20*	\$50.00	CC-4*	\$ 80.00	LP-20*	\$ 9.00	LS-20*	\$4.50
CBB5-20	\$284.00	2 3/8	18"	1 11/16	2"	1 3/16	CRT-20*	\$50.00	CC-5*	\$ 92.00	LP-20*	\$ 9.00	LS-20*	\$4.50
CBB6-30	\$349.00	3 1/4	22"	2 1/8	2 1/2	1 1/16	CRT-30*	\$66.00	CC-6*	\$113.00	LP-30*	\$11.00	LS-30*	\$6.60

CARBIDE INSERTS FOR ALORIS CARTRIDGE-HEAD BORING BARS*

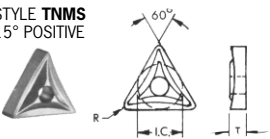
STYLE TNMG 5° NEGATIVE



STYLE TNMP 5° POSITIVE



STYLE TNMS 15° POSITIVE



BORING BAR #	CARTRIDGE #	DIMENSIONS			INSERT ORDER #	GRADE	
		I.C.	T	R		A2/A6	767
CBB4-20	CRT20	3/8	3/16	1/32	TNMG-332*	\$7.94	\$11.82
CBB5-20					TNMP-332*	\$8.54	\$12.35
					TNMS-332*	\$8.58	\$12.52

*Inserts are priced individually however, they must be purchased in packages of 10. **100 & up call for price.

BORING BAR #	CARTRIDGE #	DIMENSIONS			INSERT ORDER #	GRADE	
		I.C.	T	R		A2/A6	767
CBB6-30	CRT30	1/2	3/16	1/32	TNMG-432*	\$12.13	\$17.19
					TNMS-432*	\$12.75	\$17.84
					TNMP-432*	\$10.23	\$15.84

*Inserts are priced individually, however, they must be purchased in packages of 10. **100 & up call for price.