

QUICK CHANGE BORING BAR TOOL HOLDERS

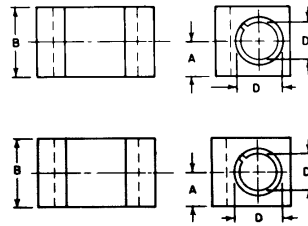
AXA-AX SERIES

#4, #41



HEAVY DUTY BORING BAR HOLDER

Equipped with a split bushing to accommodate a boring bar of smaller diameter. It grips bar with extreme rigidity, cuts smoothly without chatter.



PINS
(New Style) For Holders #4* - #41* (Set of 2)

JAM SCREWS
For Holders #4* - #41* (Set of 2)

ORDER # AXA-4
PRICE EA. \$115.00

A	B	D	D ₁
3/4	1 1/2	3/4	5/8

ORDER # AXA-41
PRICE EA. \$121.00

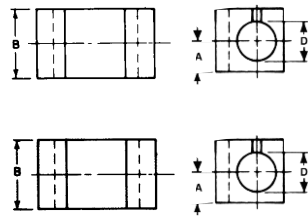
A	B	D	D ₁
7/8	1 3/4	1"	3/4

#4D, #41D



BORING BAR HOLDER

Precision ground bore and split clamping design to accommodate excellent clamping pressure and the ability to adjust positive to negative cutting angle on boring bar. Bushings sold separately, see below.



ORDER # AXA-4D
PRICE EA. \$82.00

A	B	D
3/4	1 1/2	3/4

ORDER # AXA-41D
PRICE EA. \$96.00

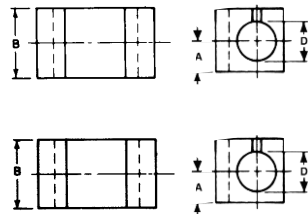
A	B	D
7/8	1 3/4	1"

#100, #104 & #141



BORING BAR HOLDER

Heavy duty boring bar holder with precision ground bore and set screw clamping to provide maximum rigidity and alignment of boring bars. Capacities listed in chart. Bushings sold separately, see below.



ORDER # AXA-100
PRICE EA. \$85.00

A	B	D
3/4	1 1/2	5/8

ORDER # AXA-104
PRICE EA. \$90.00

A	B	D
3/4	1 1/2	3/4

ORDER # AXA-141
PRICE EA. \$106.00

A	B	D
7/8	1 3/4	1"

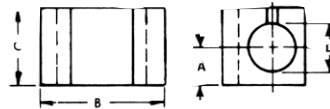
#42



BORING BAR HOLDER

A flick of the tool post handle locks both holder and boring bar. Precise alignment of boring bar is preset by means of a stop ring which is adjustable for both boring depth and cutting angle.

NOT FOR PISTON TYPE TOOL POST



STOP RINGS



ORDER # AXA-42
PRICE EA. \$218.00

A	B	C	D
7/8	3"	1 3/4	3/4

HEIGHT ADJUSTMENT ASSEMBLY



ORDER # SR-1 (3/4 I.D.)*
PRICE EA. \$22.00

ORDER # AXA-HA*
PRICE EA. \$10.50

BUSHINGS/STANDARD

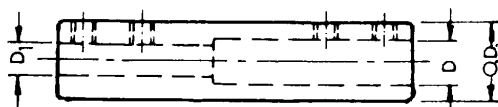
ORDER # AXA-STD*
PRICE EA. \$31.00

BUSHINGS/SPECIAL
(Non-returnable/cancelable item)

ORDER # AXA-SPL*
PRICE EA. \$66.00

REDUCER BUSHINGS FOR BORING BAR TOOL HOLDERS

Designed to accommodate cutting tools of smaller shank diameters, such as drills, endmills, and small boring bars.

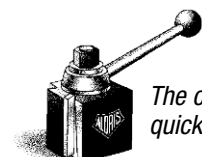


ORDERING INFORMATION		SIZES		
ORDER #	PRICE EA.	O.D.	D	D ₁
RB-31*	54.00	3/4	1/2	1/4
RB-32*	54.00	3/4	3/8	3/16
RB-41*	73.00	1"	5/8	5/16
RB-42*	73.00	1"	1/2	1/4
RB-51*	82.00	1 1/4	3/4	3/8
RB-52*	82.00	1 1/4	5/8	5/16



TECHNICAL DATA:
DIMENSIONS – CAPACITIES – MODELS

BXA-BX SERIES				CXA-CX SERIES				CA SERIES				DA SERIES				EA SERIES			
ORDER # BXA-4 PRICE EA. \$123.00				ORDER # CXA-4 PRICE EA. \$148.00				ORDER # CA-4 PRICE EA. \$175.00				ORDER # DA-4 PRICE EA. \$235.00				ORDER # EA-4 PRICE EA. \$430.00			
A	B	D	D ₁	A	B	D	D ₁	A	B	D	D ₁	A	B	D	D ₁	A	B	D	D ₁
1"	2"	1"	¾"	1"	2"	1"	¾"	1⅜"	2¾"	1¼"	1"	1⅝"	3¼"	1½"	1¼"	2¼"	4½"	2½"	2"
ORDER # BXA-41 PRICE EA. \$140.00				ORDER # CXA-41 PRICE EA. \$163.00				ORDER # CA-41 PRICE EA. \$190.00				ORDER # DA-41 PRICE EA. \$254.00							
A	B	D	D ₁	A	B	D	D ₁	A	B	D	D ₁	A	B	D	D ₁				
1"	2"	1¼"	1"	1⅞"	2¼"	1¼"	1"	1⅜"	2¾"	1½"	1¼"	1¾"	3½"	2"	1½"				
ORDER # BXA-PINS* PRICE \$15.50 SET				ORDER # CXA-PINS* PRICE \$15.50 SET				ORDER # CA-PINS* PRICE \$17.00 SET				ORDER # DA-PINS* PRICE \$20.00 SET				ORDER # EA-PINS* PRICE \$21.00 SET			
ORDER # BXA-JS* PRICE \$13.00 SET				ORDER # CXA-JS* PRICE \$13.00 SET				ORDER # CA-JS* PRICE \$15.50 SET				ORDER # DA-JS* PRICE \$20.00 SET				ORDER # EA-JS* PRICE \$20.00 SET			
ORDER # BXA-4D PRICE EA. \$100.00				ORDER # CXA-4D PRICE EA. \$115.00				ORDER # CA-4D PRICE EA. \$142.00				ORDER # DA-4D PRICE EA. \$200.00				ORDER # EA-4D PRICE EA. \$333.00			
A	B	D		A	B	D		A	B	D		A	B	D		A	B	D	
1"	2"	1"		1"	2"	1"		1⅜"	2¾"	1¼"		1⅝"	3¼"	1½"		2¼"	4½"	2½"	
ORDER # BXA-41D PRICE EA. \$114.00				ORDER # CXA-41D PRICE EA. \$128.00				ORDER # CA-41D PRICE EA. \$164.00				ORDER # DA-41D PRICE EA. \$212.00							
A	B	D		A	B	D		A	B	D		A	B	D					
1"	2"	1¼"		1⅞"	2¼"	1¼"		1⅜"	2¾"	1½"		1¾"	3½"	2"					
ORDER # BXA-100 PRICE EA. \$103.00				ORDER # CXA-100 PRICE EA. \$115.00				ORDER # CA-100 PRICE EA. \$140.00				ORDER # DA-100 PRICE EA. \$181.00				ORDER # EA-100 PRICE EA. \$394.00			
A	B	D		A	B	D		A	B	D		A	B	D		A	B	D	
1"	2"	¾"		1"	2"	¾"		1¼"	2½"	1"		1⅜"	2¾"	1¼"		1¾"	3½"	2"	
ORDER # BXA-104 PRICE EA. \$109.00				ORDER # CXA-104 PRICE EA. \$123.00				ORDER # CA-104 PRICE EA. \$148.00				ORDER # DA-104 PRICE EA. \$188.00				ORDER # EA-104 PRICE EA. \$418.00			
A	B	D		A	B	D		A	B	D		A	B	D		A	B	D	
1"	2"	1"		1"	2"	1"		1¼"	2½"	1¼"		1½"	3"	1½"		2"	4"	2½"	
ORDER # BXA-141 PRICE EA. \$124.00				ORDER # CXA-141 PRICE EA. \$143.00				ORDER # CA-141 PRICE EA. \$164.00				ORDER # DA-141 PRICE EA. \$218.00				ORDER # EA-141 PRICE EA. \$478.00			
A	B	D		A	B	D		A	B	D		A	B	D		A	B	D	
1"	2"	1¼"		1⅞"	2¼"	1¼"		1⅜"	2¾"	1½"		1¾"	3½"	2"		2¼"	4½"	3"	
ORDER # BXA-42 PRICE EA. \$254.00				ORDER # CXA-42 PRICE EA. \$245.00				ORDER # CA-42 PRICE EA. \$290.00											
A	B	C	D	A	B	C	D	A	B	C	D								
⅞"	3"	1¼"	¾"	1"	3¾"	2"	1"	1⅞"	4¼"	2¼"	1"								
ORDER # SR-1 (¾ I.D.)* PRICE EA. \$22.00				ORDER # SR-2 (1" I.D.)* PRICE EA. \$24.00				ORDER # SR-2 (1" I.D.)* PRICE EA. \$24.00											
ORDER # BXA-HA* PRICE EA. \$10.50				ORDER # CXA-HA* PRICE EA. \$11.00				ORDER # CA-HA* PRICE EA. \$13.00				ORDER # DA-HA* PRICE EA. \$16.00				ORDER # EA-HA* PRICE EA. \$19.00			
ORDER # BXA-STD* PRICE EA. \$31.00				ORDER # CXA-STD* PRICE EA. \$33.00				ORDER # CA-STD* PRICE EA. \$36.00				ORDER # DA-STD* PRICE EA. \$56.00				ORDER # EA-STD* PRICE EA. \$76.00			
ORDER # BXA-SPL* PRICE EA. \$66.00				ORDER # CXA-SPL* PRICE EA. \$74.00				ORDER # CA-SPL* PRICE EA. \$79.00				ORDER # DA-SPL* PRICE EA. \$121.00				ORDER # EA-SPL* PRICE EA. \$167.00			



The originator of
quick change tooling